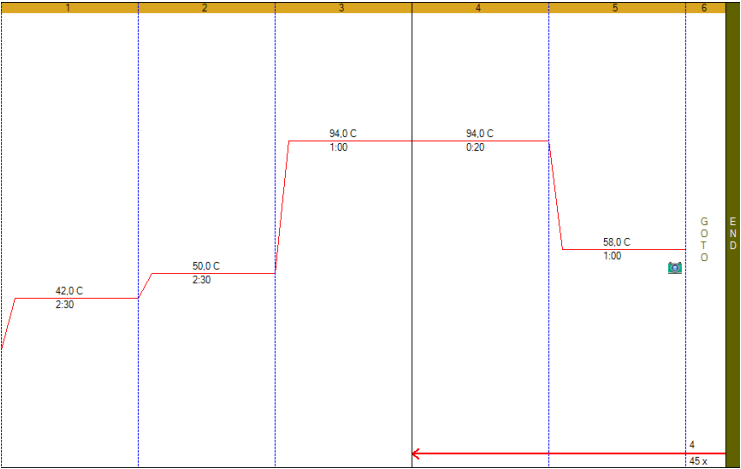


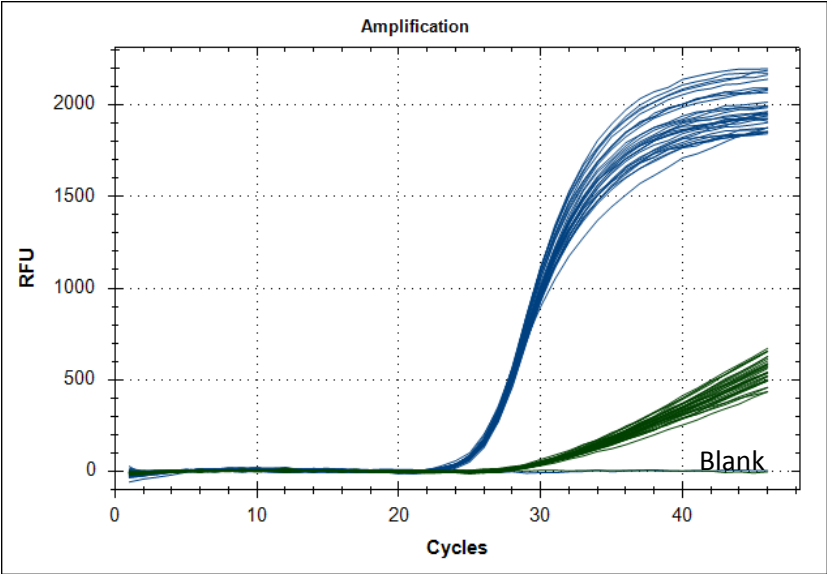
Slight modifications

Running conditions



Results, Sars-Cov-2 (blue), Internal control (green)

Sars-Cov-2	E-gen	Mean Cq	24,8	1 STD	0,2
Internal control	MS2	Mean Cq	29,0	1 STD	0,7



The same template is used in 31 wells, no template in the blank.

20 microliter PCR setup

Fragment:	E-gen and MS2			Date	05.11.2020
PCR volum, $\mu$ l	20		# of reactions		1
	Working				
	solutions		Total volume 20 $\mu$ l		Desired
	concentration		Volum		concentration
H2O			15,74		
10X Thermopol #1	0 mM MgCl		2,00		
MgSO4	200 mM		0,40		4 mM
Primer forward	100 $\mu$ M		0,08		0,4 $\mu$ M
Primer reverse	100 $\mu$ M		0,08		0,4 $\mu$ M
Probe E-gene	100 $\mu$ M		0,04		0,2 $\mu$ M
Primer forward	100 $\mu$ M		0,06		0,3 $\mu$ M
Primer reverse	100 $\mu$ M		0,06		0,3 $\mu$ M
Probe MS2	100 $\mu$ M		0,02		0,1 $\mu$ M
dNTP	100 mM		0,08		400 $\mu$ M
RNA	10 ng		1,00		0,5 ng/ $\mu$ l
BSA/DMSO	100 %		0,20		1 %
Taq native	40 U/ $\mu$ l		0,04		0,075 U/ $\mu$ l
MashUP	7,5 U/ $\mu$ l		0,20		0,075 U/ $\mu$ l